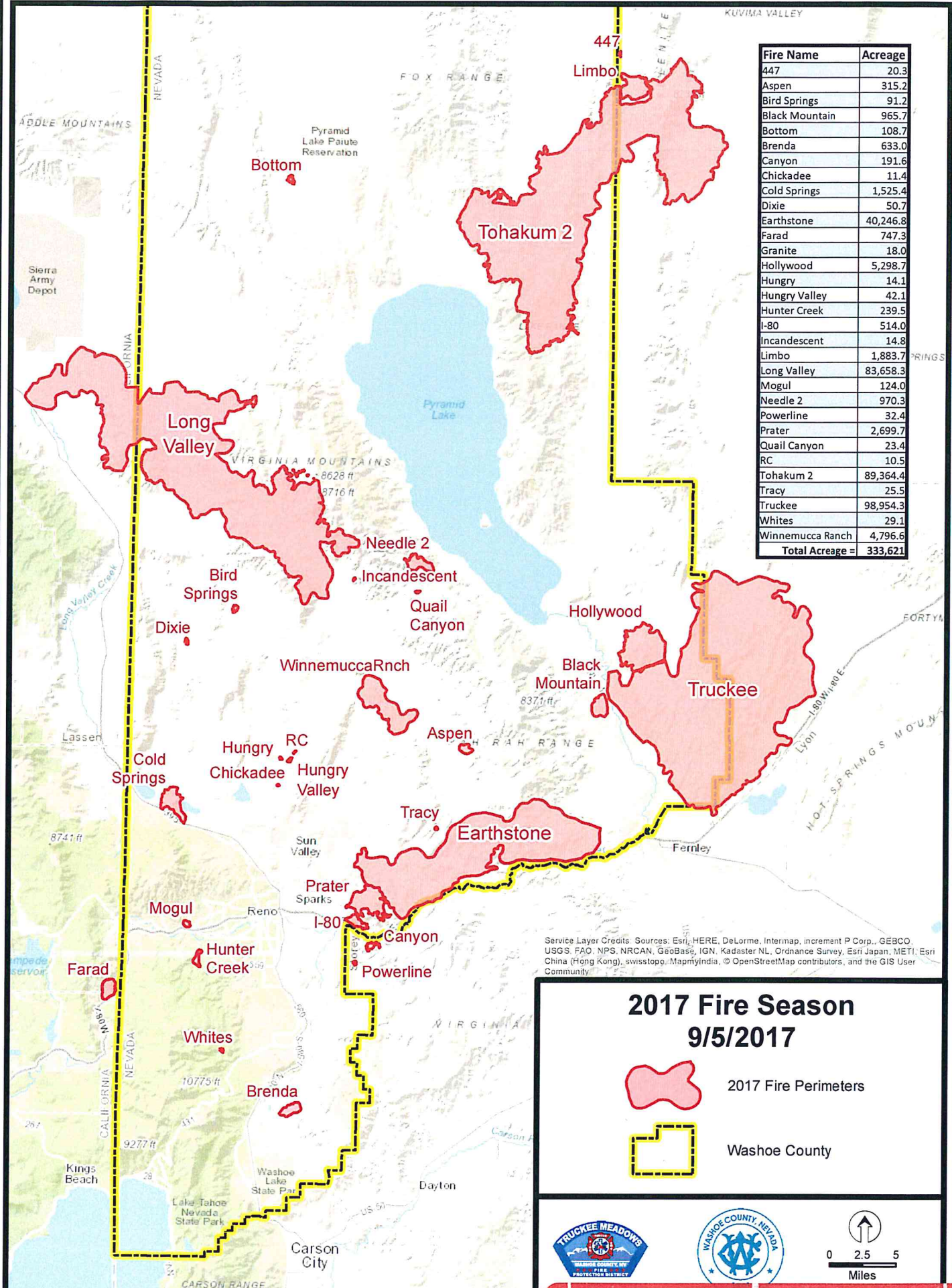


The attached document was submitted to the
Washoe County Board of Commissioners during
the meeting held on 9-12-17.
by Chief Charles Moore
for Agenda Item No. 8
and included here pursuant to NRS 241.020(8).

| Fire Name | Acreage |
|------------------------|----------------|
| 447 | 20.3 |
| Aspen | 315.2 |
| Bird Springs | 91.2 |
| Black Mountain | 965.7 |
| Bottom | 108.7 |
| Brenda | 633.0 |
| Canyon | 191.6 |
| Chickadee | 11.4 |
| Cold Springs | 1,525.4 |
| Dixie | 50.7 |
| Earthstone | 40,246.8 |
| Farad | 747.3 |
| Granite | 18.0 |
| Hollywood | 5,298.7 |
| Hungry | 14.1 |
| Hungry Valley | 42.1 |
| Hunter Creek | 239.5 |
| I-80 | 514.0 |
| Incandescent | 14.8 |
| Limbo | 1,883.7 |
| Long Valley | 83,658.3 |
| Mogul | 124.0 |
| Needle 2 | 970.3 |
| Powerline | 32.4 |
| Prater | 2,699.7 |
| Quail Canyon | 23.4 |
| RC | 10.5 |
| Tohakum 2 | 89,364.4 |
| Tracy | 25.5 |
| Truckee | 98,954.3 |
| Whites | 29.1 |
| Winnemucca Ranch | 4,796.6 |
| Total Acreage = | 333,621 |



Service Layer Credits: Sources: Esri, HERE, DeLorme, Intermap, increment P Corp., GEBCO, USGS, FAO, NPS, NRCAN, GeoBase, IGN, Kadaster NL, Ordnance Survey, Esri Japan, METI, Esri China (Hong Kong), swisstopo, MapmyIndia, © OpenStreetMap contributors, and the GIS User Community

2017 Fire Season
9/5/2017

 2017 Fire Perimeters

 Washoe County



9/12/17 BCC #8
 Chief Charles Moore